

a water secure world

Presentation of the NWSAS : Previous and ongoing collaboration with GWP-Med

*Prepared by Dr. Sarra Touzi
Senior Programme Officer
GWP-Med*

Nov. 2018

GWP & GWP-Med

1992

Rio and Dublin Conference



Global consensus and definition of IWRM principles



1996

Creation of Global Water Partnership (GWP)

Our Vision

A water secure world

Our Mission

To advance governance and management of water resources for sustainable and equitable development

Our global network

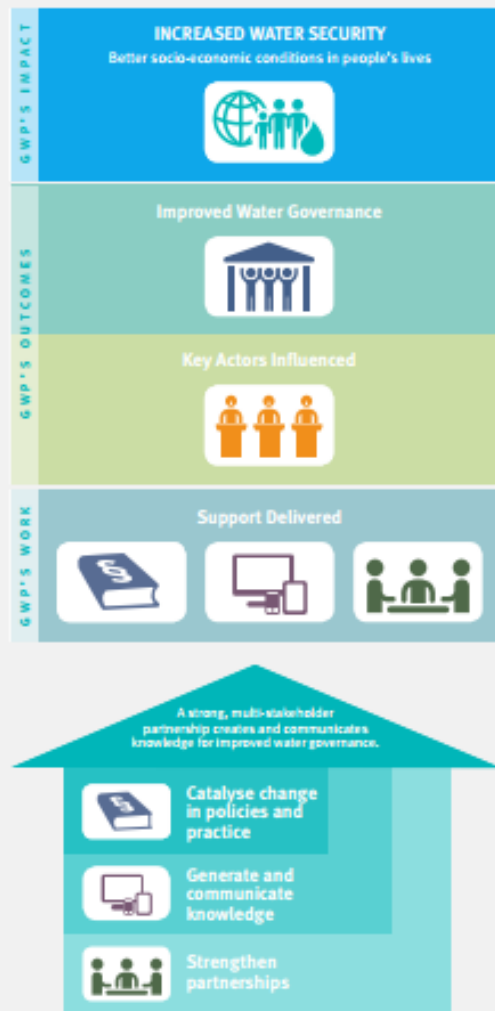


The GWP-Mediterranean

- ★ Head Office
- ★ Antenna



HOW GWP WORKS

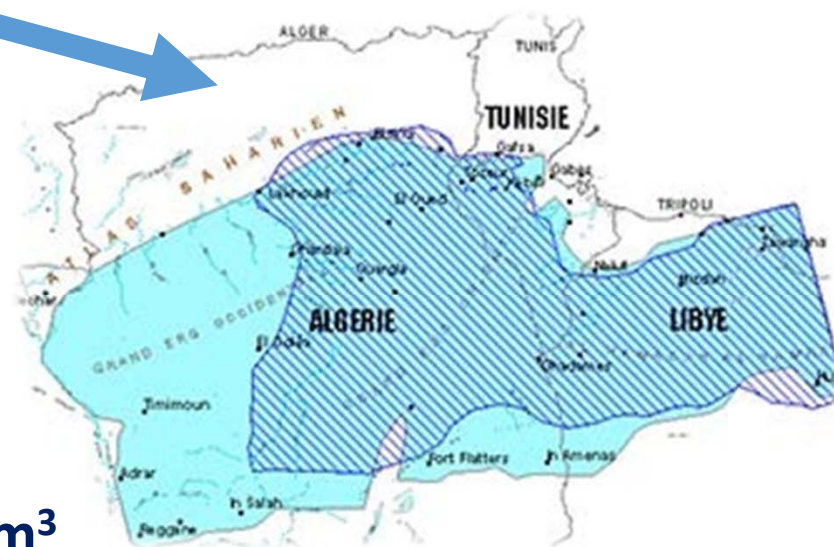
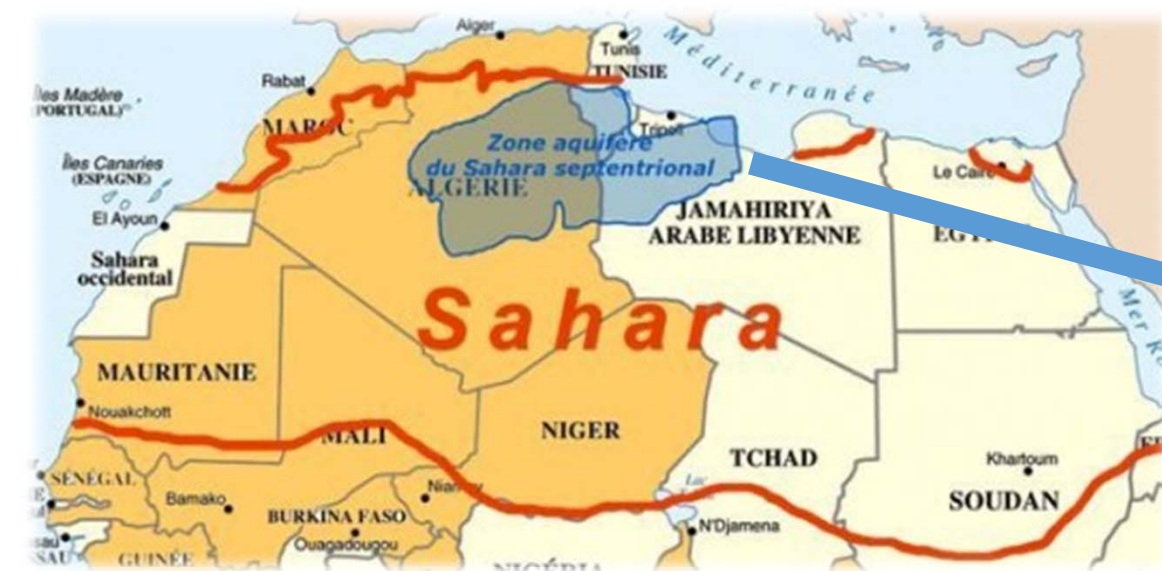


We mobilise our **Neutral Multi-Stakeholders Platform** :

- ⇒ Support water public policies formulation
- ⇒ Facilitate dialogue between different stakeholders
- ⇒ Support advocacy
- ⇒ Provide technical expertise
- ⇒ Knowledge developpement and sharing
- ⇒ Capacities reinforcement

The North Western Sahara Aquifer System (NWSAS)

The North Western Sahara Aquifer (NWSAS) : Shared between Algeria, Libya, Tunisia



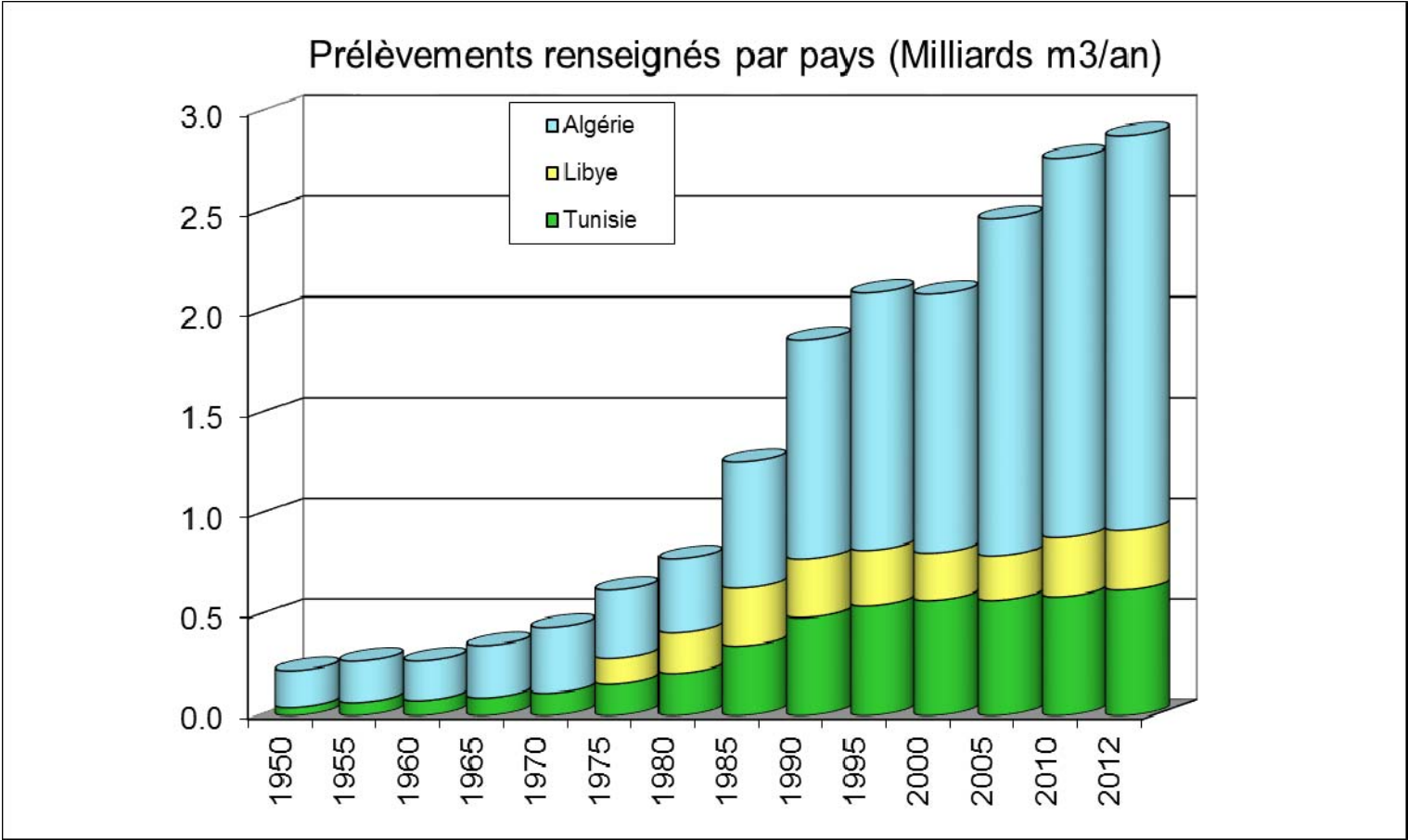
⇒ Extends over a 1.000.000 km²

(60 % in Algeria / 25 % in Libya / 15% in Tunisia)

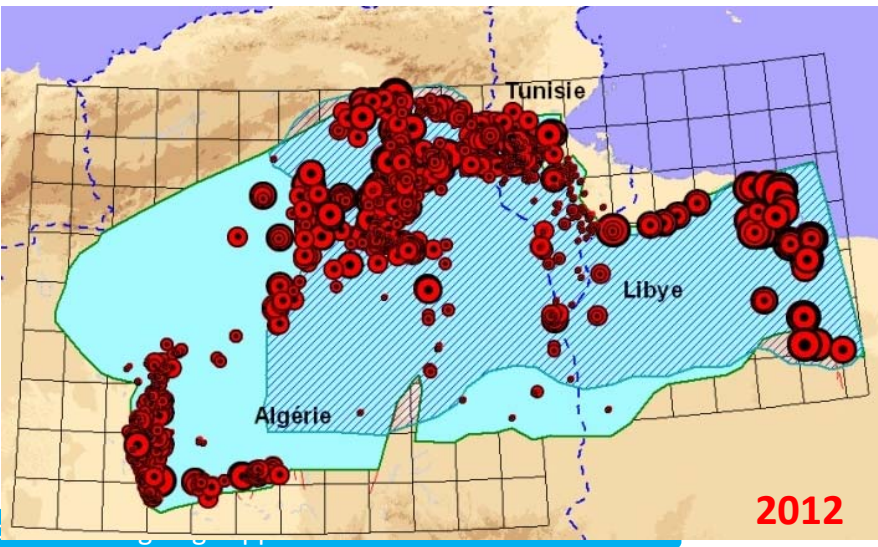
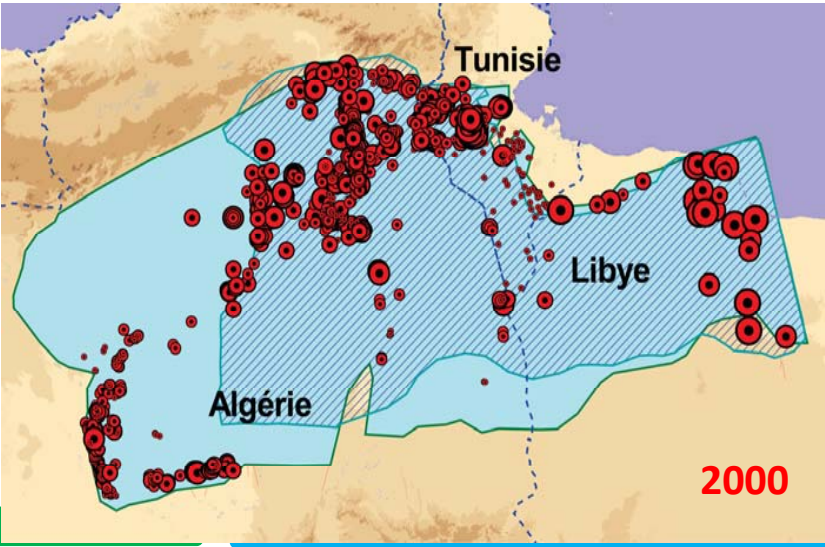
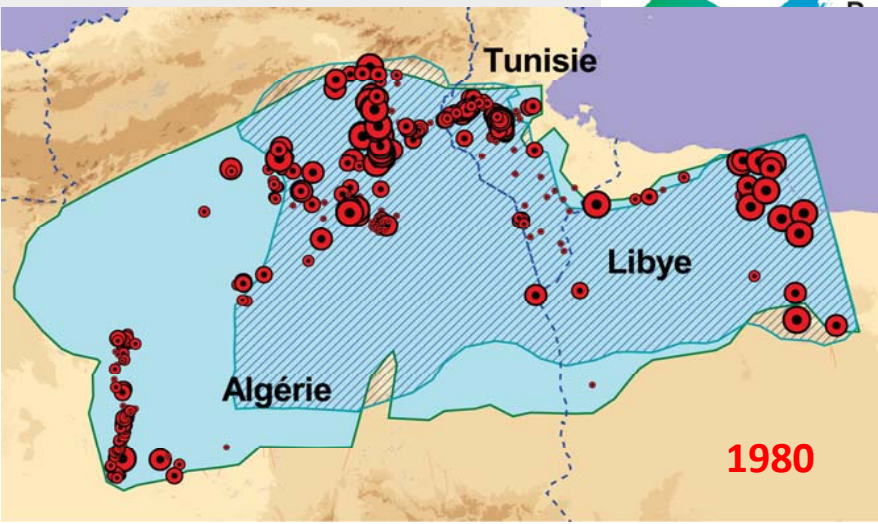
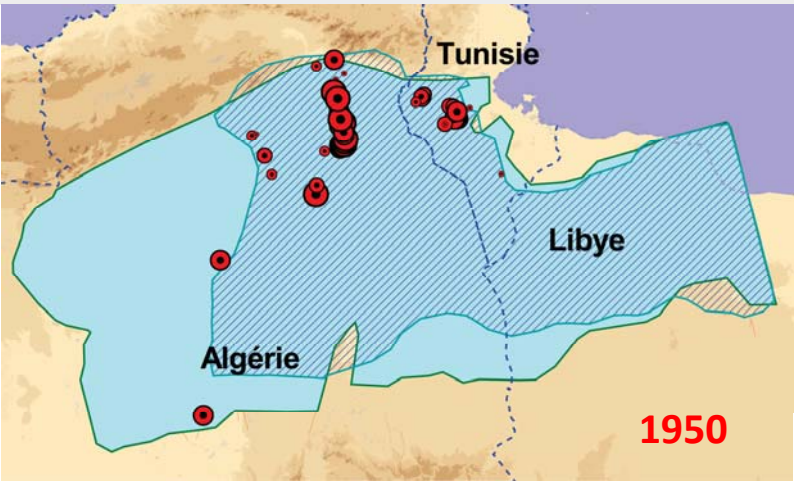
⇒ Water resources potential : 60.000 billion m³

⇒ BUT ONLY 1 billion m³/Year are renewable

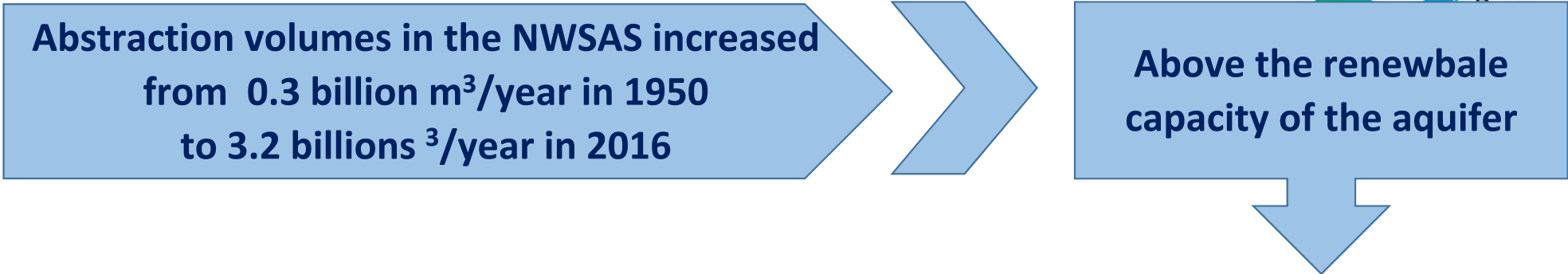
Evolution of the abstraction in the NWSAS



Evolution of the wells and boreholes in the NWSAS



Resulting Challenges in the NWSAS



- Decrease of the agriculture yields
- Increase of the production cost (energy consumption due to deeper water table, water treatment for brakish water,...)
- Socio-economic difficulties

- Water table drawdown reaching more than 2m/year in certain areas
- Water salinisation
- Marine intrusion in the Djeffara (coastal part of the aquifer)
- Reduction of the artesianism
- Dying-up of the oulets and the natural springs
- Lands salinisation and degradation

SASS Project (1999 – 2013) implemented by OSS and partners.

The project let to :

- Creation of a common database
- Elaboration of a hydrogeological model of the entire aquifer
- Setting up [the NWSAS Consultation Mechanism](#)
- Diagnosis of the agricultural practices in the basin
- Pilot projects for the sustainable use of water resources

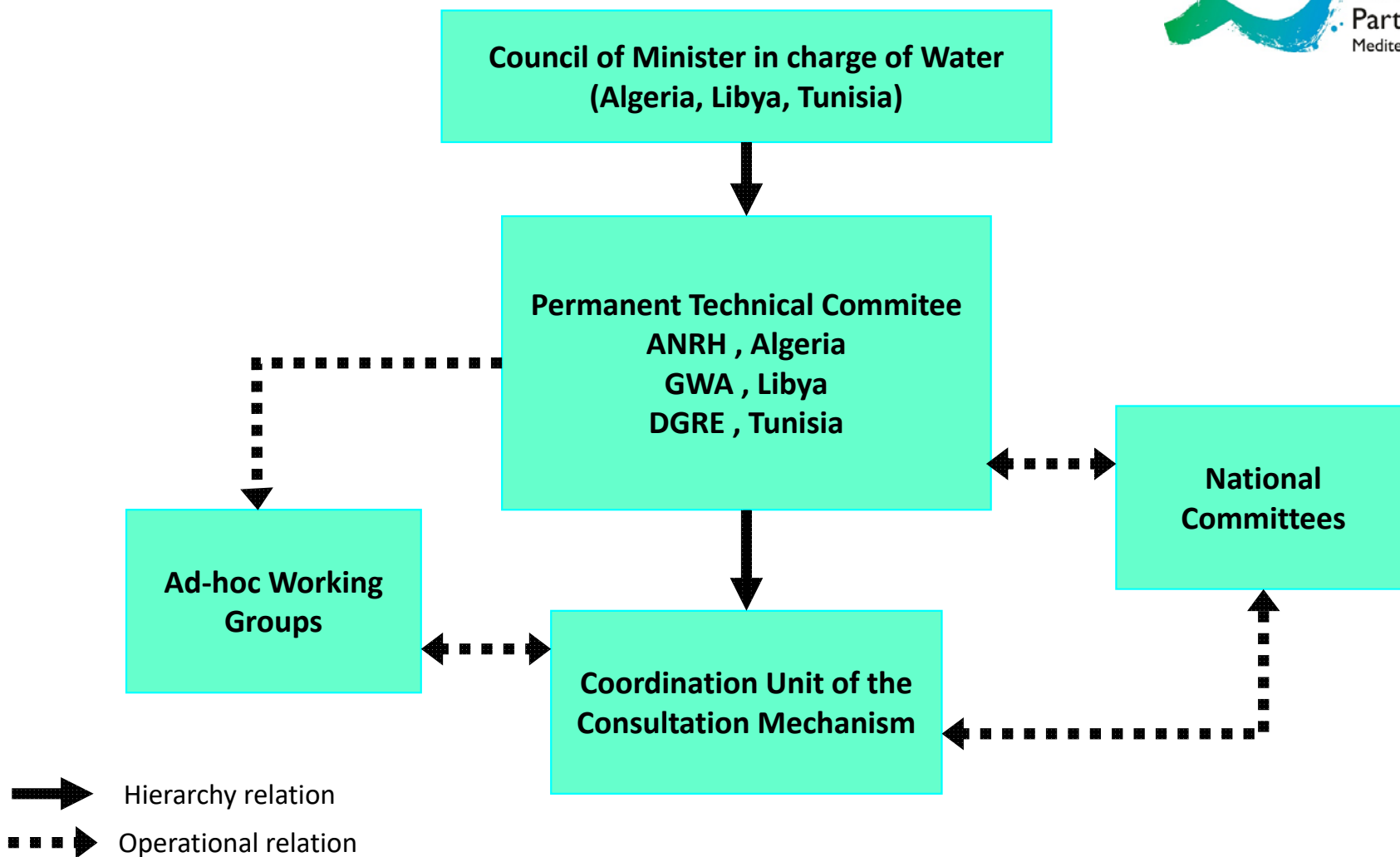
The NWSAS Consultation Mechanism :



In 2008, Ministerial Declaration for the creation of the NWSAS consultation Mechanism (NWSAS CM) as the joint body for the transboundary cooperation between the 3 countries

The NWSAS is hosted and the secretariat is served by OSS

Structure of the NWSAS-CM

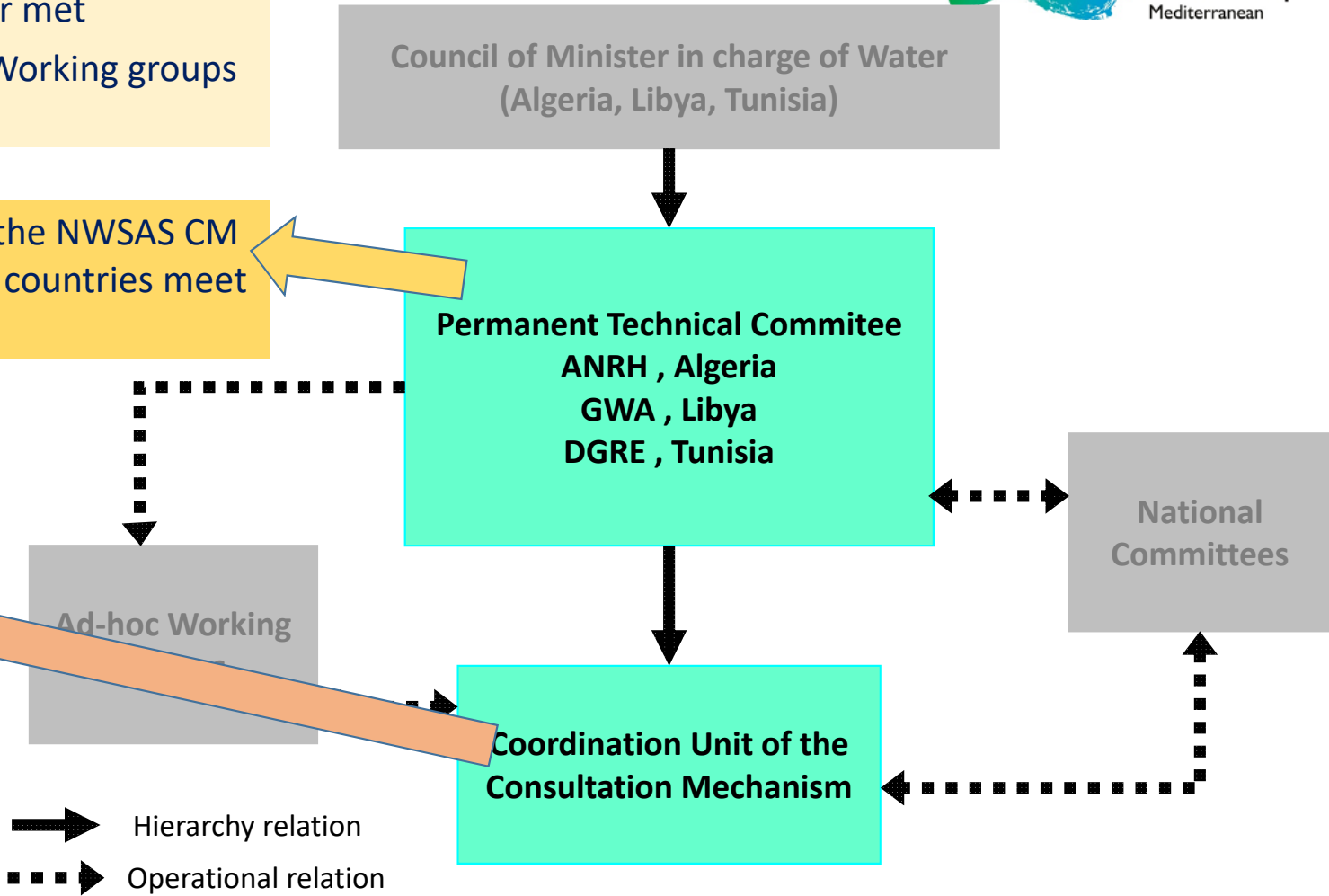


Structure of the NWSAS-CM

- The Council of Ministers never met
- The National Committee and Working groups not established

- The decision making body of the NWSAS CM : the Water Directors of the 3 countries meet once a year

- Operational body of the NWSAS CM
- Coordinator designated by the countries for a 2 years mandate in a rotative basis



WACDEP (Water, Climate and Development Programme)

WACDEP is contributing to implement the climate change commitments of the Sharm el-Sheik Declaration and the «Priority Program of Action for Water Resources Management in Africa (PPA-GRE) 2016-2025».

- Duration : 2011-2019
- Budget : 700,000 €
- Multi-donors project
- Led and implemented by GWP-Med in collaboration with OSS

Objectives :

WACDEP aims more specifically to :

- Evaluate the impacts of climate change on the water resources in the basin and integrate in the NWSAS hydrogeological model
- Reinforce the institutional and legal framework of the NWSAS CM to enhance the transboundary cooperation in the basin
- Identify and leverage funds for pilot actions implementation for the sustainable use of natural resources in the basin

Objectives :

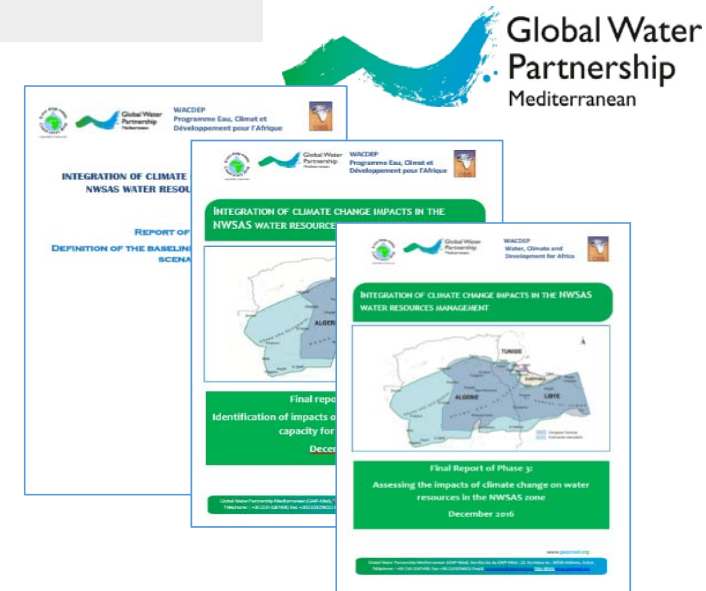
WACDEP aims more specifically to :

- Evaluate the impacts of climate change on the water resources in the basin and integrate in the NWSAS hydrogeological model
- Reinforce the institutional and legal framework of the NWSAS CM to enhance the transboundary cooperation in the basin
- Identify and leverage funds for pilot actions implementation for the sustainable use of natural resources in the basin

WACDEP Achieved results

Climate Change mainstreaming

- Evaluation of the direct and indirect impacts of CC (3 reports)
- Multistakeholders dialogue and formulation of recommendation to further intersectoral integration



2nd Regional Workshop, CC Impact Evaluation. 22 Dec. 2015, Tunis

WACDEP Achieved results

Technical/institutional capacities reinforcement

- Training workshops on Modelling, CC vulnerability assessment and adaptation measures for sustainable and resilient management
- Field visits to transboundary river commissions to learn about the benefits of cooperation, the institutional settings and legal frameworks



WACDEP Achieved results



Enhancement of the NWSAS Consultation Mechanism

- Diagnostic for the current legal and institutional framework of the NWSAS consultation Mechanism
- Validation by the Technical Permanent Committee of the current limitations of the institutional and legal setting
- Climate funds mapping to leverage funds for the NWSAS CM : institutional barriers do not allow access to these funds



SIDA Matchmaker (Making water cooperation happen in the Mediterranean)

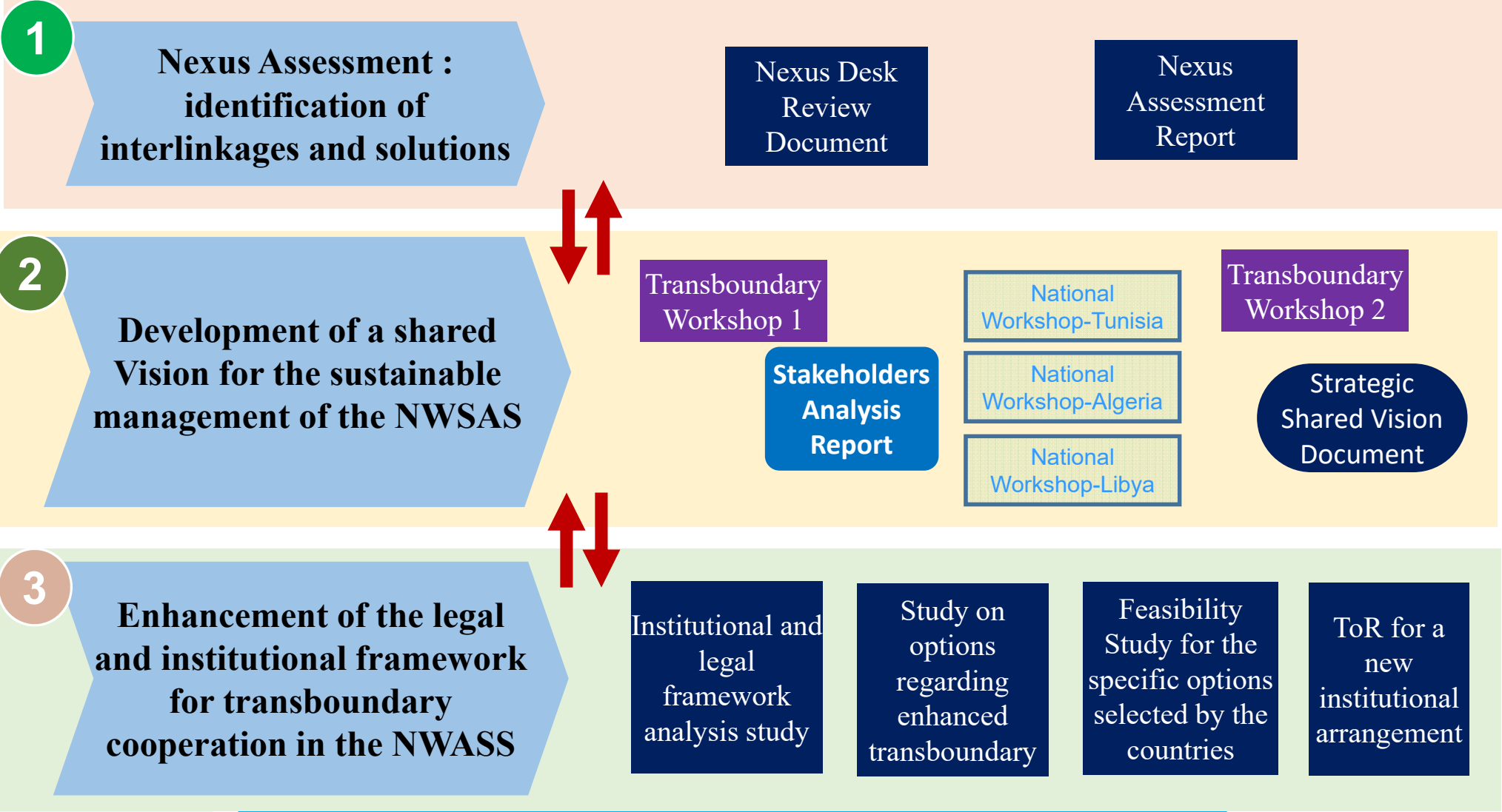
- Duration : 2015-2019
- Budget : 800,000 €
- Donor : Swedish International Development Cooperation Agency (SIDA)
- Led and implemented by GWP-Med in collaboration with OSS and UNECE

Objectives :

The project aims to build commitment for an improved management of the NWSAS and to foster transboundary cooperation. More specifically the project aims to :

- Identify the Water-Food-Energy-Ecosystems Nexus interlinkages and intersectoral synergies and outline possible Nexus solutions
- Develop a Strategic Shared Vision for the sustainable management of the NWSAS through a consultation process that involves stakeholders from NWSAS countries and is coordinated by the NWSAS Consultation Mechanism
- Enhance the capacities of the NWSAS Consultation Mechanism by consolidating the institutional and legal framework and its missions to secure coordinated and sustainable development in the basin and support the implementation of the Strategic Shared Vision

Project components



Matchmaker project achieved results



- Stakeholders mapping assessment
- Nexus Assessment ongoing
- Institutional capacities reinforcement through the participation of the NWSAS CM representatives to the UNECE meetings and to international events
- Definition of the needs for the enhancement of NWSAS CM
- Selection by the Technical Permanent Committee of the institutional scheme to be detailed through a feasibility study

Formulate an new project in the NWSAS

Facilitated dialogue with the representatives of the countries to identify pilot actions to be formulated in a new project (regional workshop in July 2018)

Suggested ideas by the countries :

- Strengthening and modernization of the groundwater measurement and monitoring network
- Collective and participatory management of groundwater (groundwater contracts)
- Use of non-conventional water in irrigation (drainage water, demineralization of brackish water, treated wastewater)
- Artificial recharge
- Water savings and valorization of the complex water-soil
- Use of renewable energies

THANK YOU

sarra@gwpmed.org